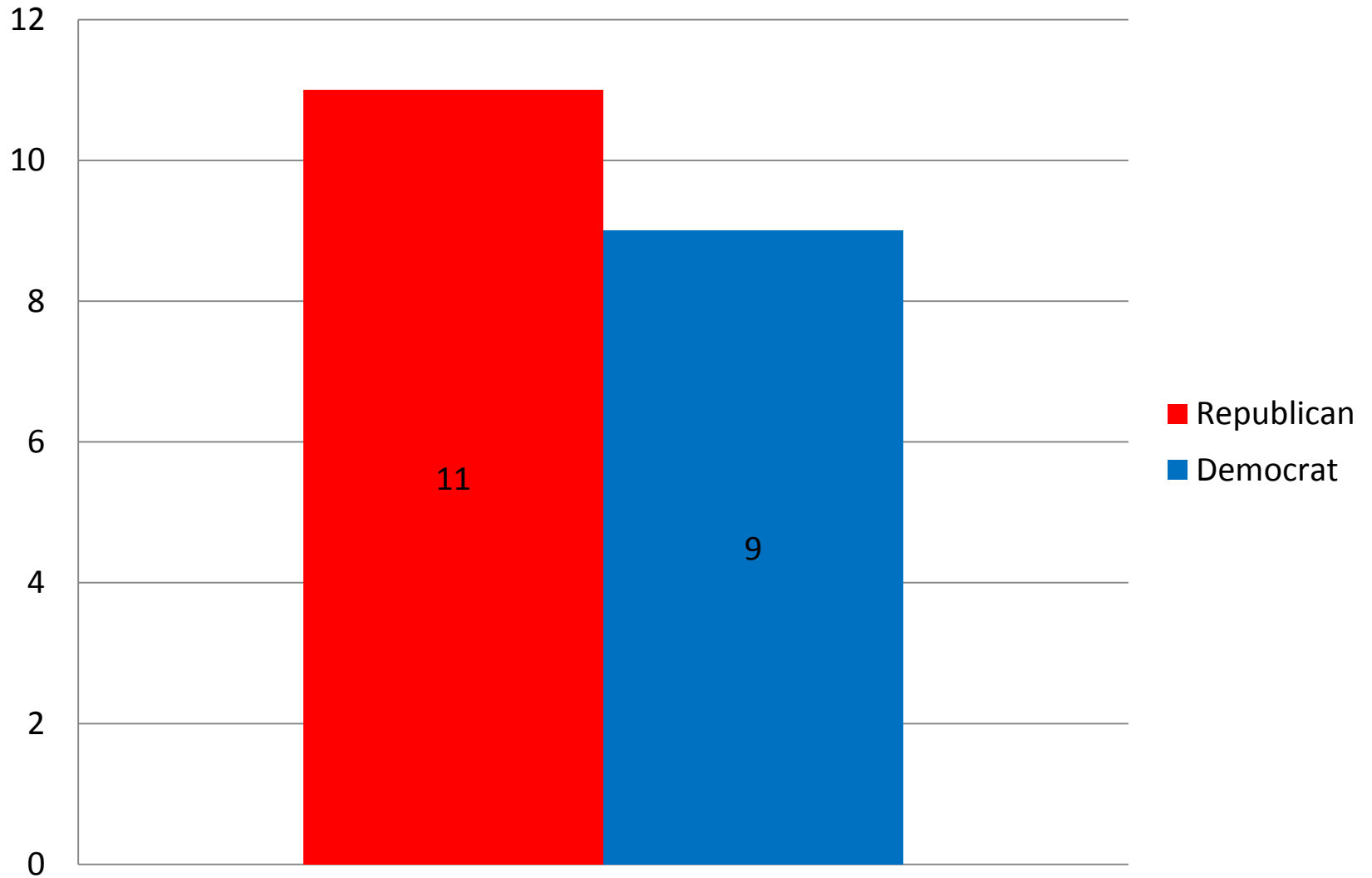


It's Not Just Donkeys and Elephants Any More

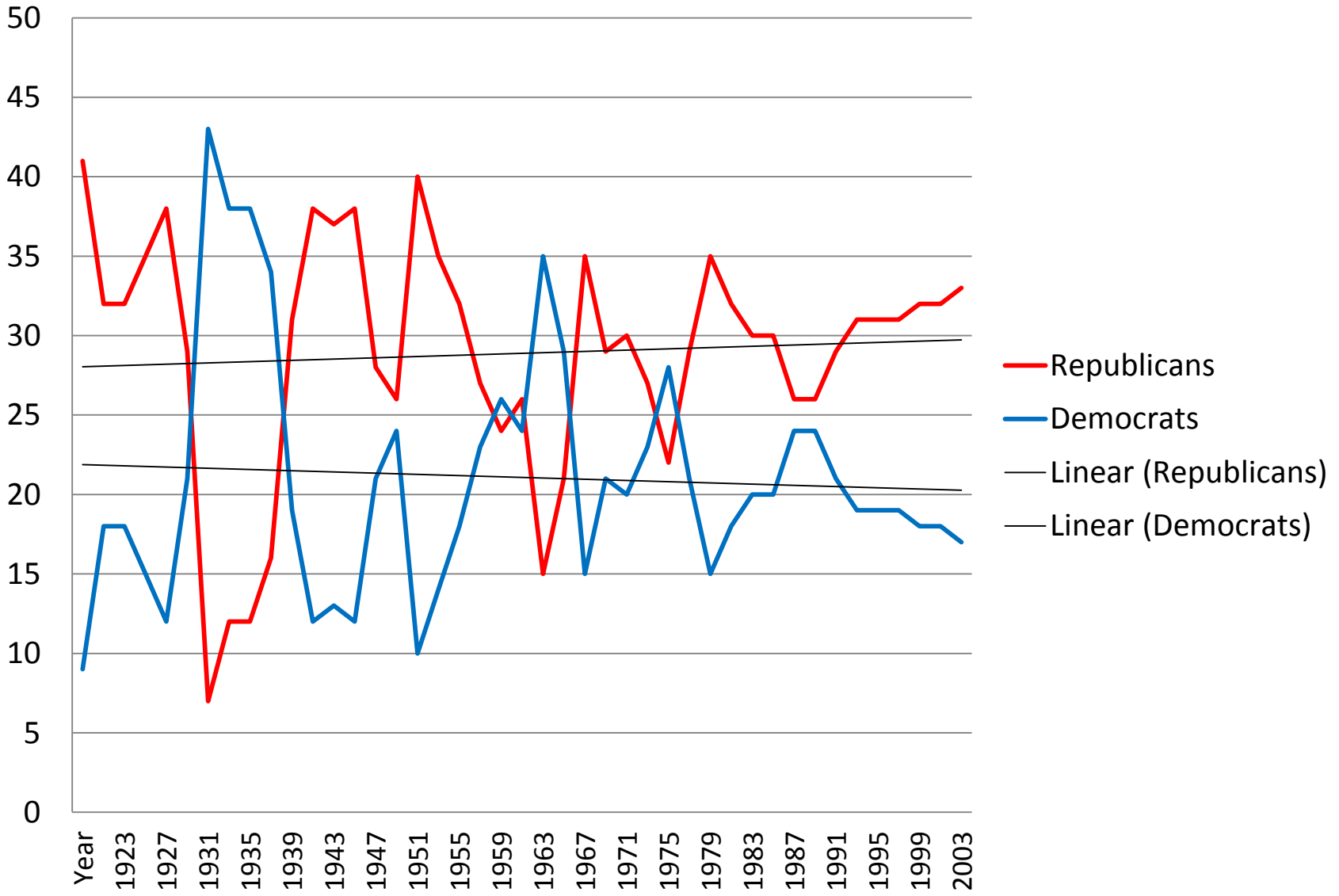
Indiana Associated Press Managing
Editors

October 7, 2010

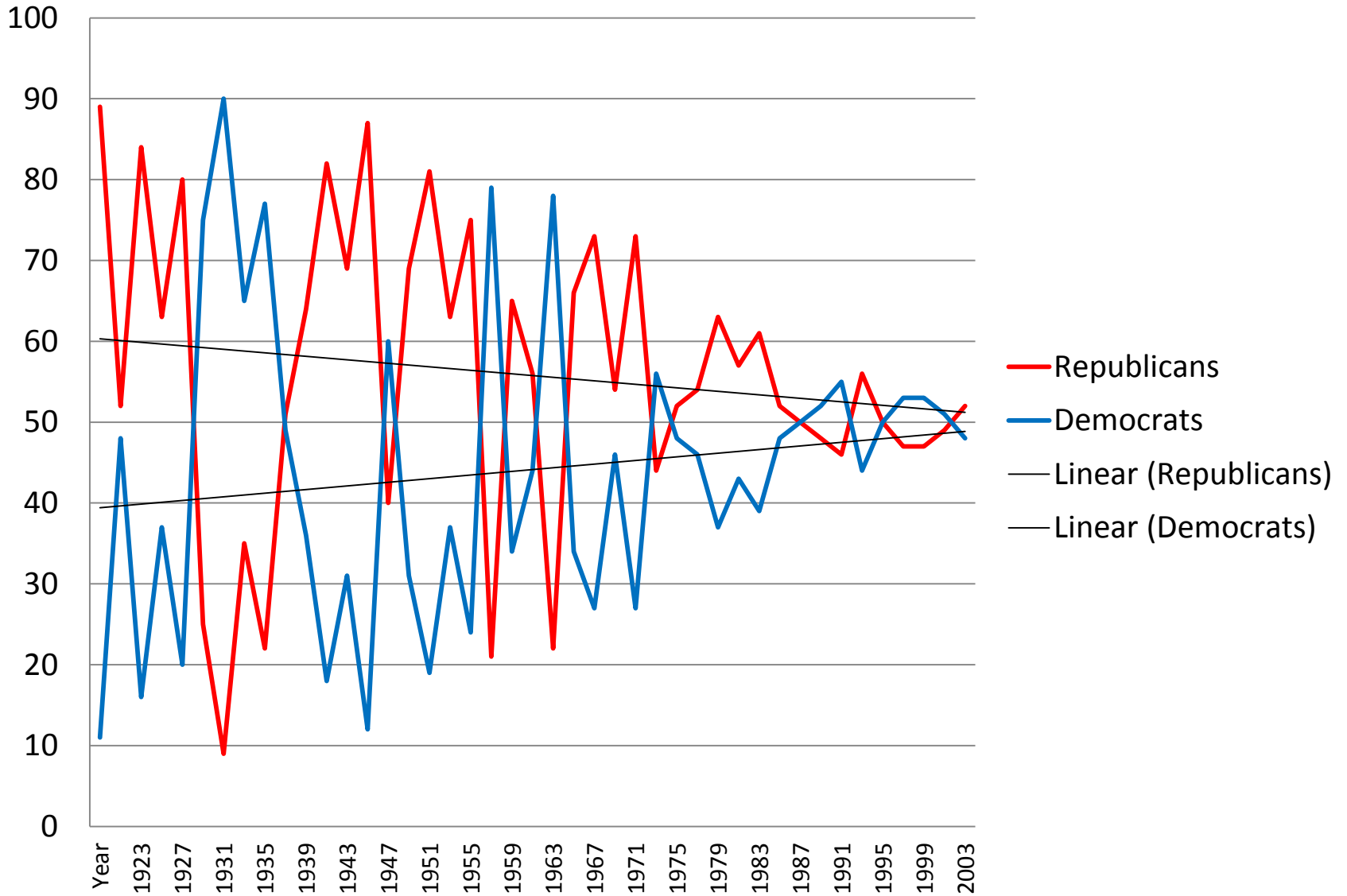
Gubernatorial Victories, 1920-2008



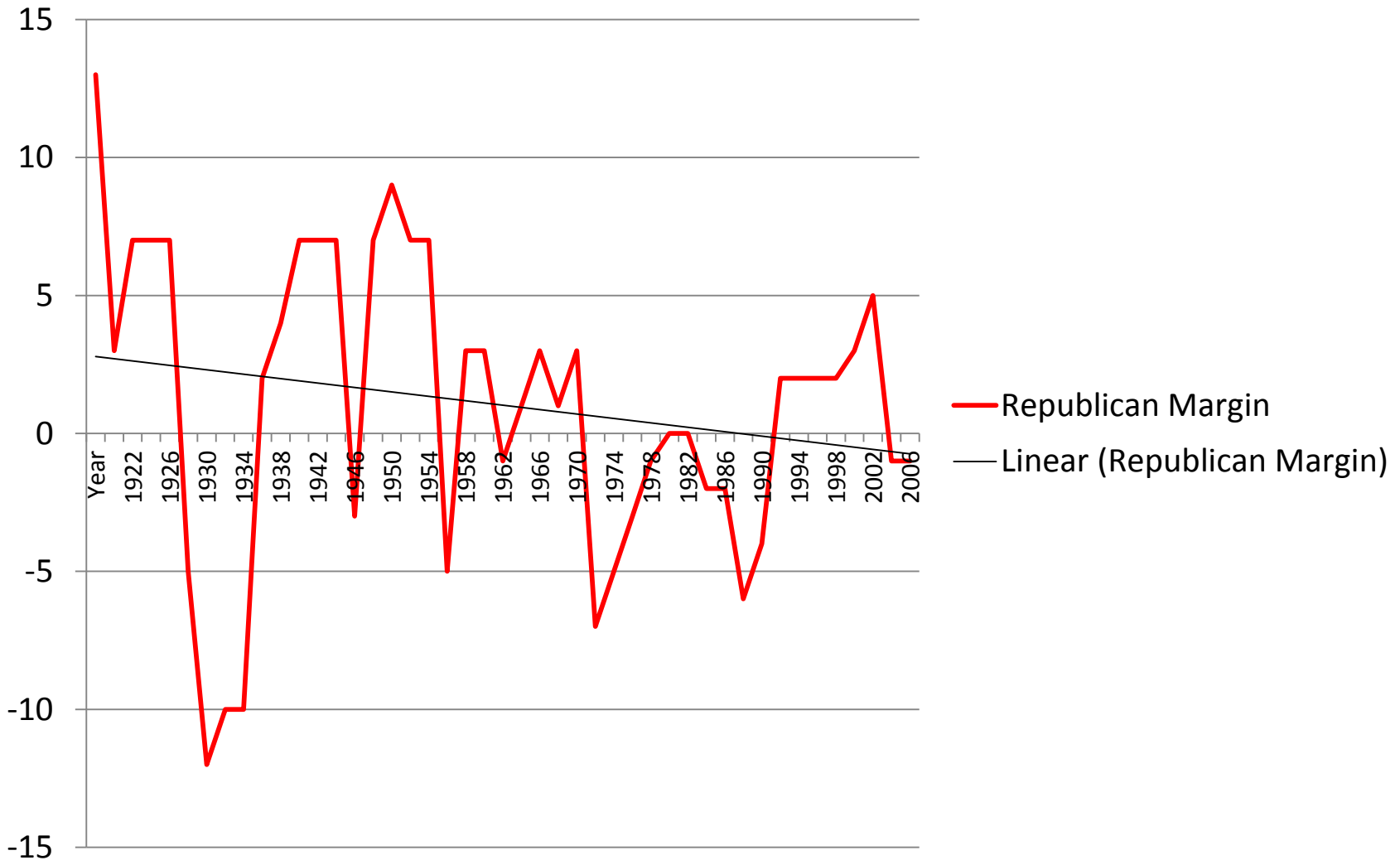
Control of the Indiana Senate, 1920-2005



Control of the Indiana House, 1920-2005



Republican Margin in the Indiana Delegation to the United States House of Representatives, 1920-2008



If the Republican Primary for US Senate were today, who would you vote for? (candidate names rotated)
 Don Bates Jr.? Richard Behney? Dan Coats? John Hostettler? Or Marlin Stutzman?

407 Likely Voters in Republican Primary	All	Party Affiliation							Tea Party Movement				Tea Party Identi		2008 Vote	
		Strong D	Dem	Indy Lean D	Ind	Indy Lean R	Rep	Strong R	Fav	Unfav	Neut	No Op	Yes	No	Obama	McCain
Margin of Sampling Error: ± 5%																
Bates	6%	**	**	**	6%	2%	4%	9%	7%	**	7%	0%	9%	3%	2%	7%
Behney	4%	**	**	**	5%	4%	2%	4%	4%	**	0%	2%	5%	4%	6%	4%
Coats	36%	**	**	**	23%	38%	33%	39%	34%	**	47%	41%	30%	36%	27%	36%
Hostettler	24%	**	**	**	35%	20%	31%	19%	21%	**	27%	48%	21%	27%	29%	24%
Stutzman	18%	**	**	**	18%	21%	17%	17%	20%	**	8%	6%	23%	18%	24%	18%
Undecided	13%	**	**	**	13%	16%	13%	11%	14%	**	11%	3%	11%	12%	12%	11%
Total	100%	100%	100%	100%	100%	100%	100%	100%	100%	100%	100%	100%	100%	100%	100%	100%
Composition of Likely Voters in Republican Primary	100%	1%	2%	1%	11%	17%	24%	44%	78%	4%	12%	6%	56%	23%	7%	86%

Thinking ahead now to the general election for United States Senate in November... If the only two names on the ballot for United States Senate were Democrat Brad Ellsworth and Republican Dan Coats, who would you vote for?

1250 Registered Voters	All	Party Affiliation							Tea Party Movement				Tea Party Identi		2008 Vote	
		<u>Strong D</u>	<u>Dem</u>	<u>Indy Lean D</u>	<u>Ind</u>	<u>Indy Lean R</u>	<u>Rep</u>	<u>Strong R</u>	<u>Fav</u>	<u>Unfav</u>	<u>Neut</u>	<u>No Op</u>	<u>Yes</u>	<u>No</u>	<u>Obama</u>	<u>McCain</u>
Ellsworth (D)	31%	76%	49%	66%	23%	5%	13%	5%	9%	72%	26%	32%	10%	49%	62%	9%
Coats (R)	47%	13%	24%	14%	30%	66%	73%	86%	71%	14%	47%	33%	77%	30%	19%	74%
Undecided	22%	11%	27%	20%	47%	29%	14%	9%	20%	14%	27%	36%	12%	21%	19%	17%
Total	100%	100%	100%	100%	100%	100%	100%	100%	100%	100%	100%	100%	100%	100%	100%	100%
Composition of Registered Voters	100%	15%	15%	7%	19%	10%	16%	19%	42%	23%	20%	15%	27%	48%	39%	48%

In general, are things in the United States headed in the right direction? Or are they off on the wrong track?

1250 Registered Voters	All	Party Affiliation							Tea Party Movement				Tea Party Identi		2008 Vote	
		<u>Strong D</u>	<u>Dem</u>	<u>Indy Lean D</u>	<u>Ind</u>	<u>Indy Lean R</u>	<u>Rep</u>	<u>Strong R</u>	<u>Fav</u>	<u>Unfav</u>	<u>Neut</u>	<u>No Op</u>	<u>Yes</u>	<u>No</u>	<u>Obama</u>	<u>McCain</u>
Right Direction	28%	75%	48%	58%	20%	2%	8%	2%	3%	76%	22%	29%	3%	47%	62%	4%
Wrong Track	66%	20%	44%	35%	69%	96%	83%	96%	95%	21%	65%	54%	96%	46%	29%	92%
Not Sure	7%	5%	8%	7%	12%	3%	9%	2%	2%	3%	12%	17%	1%	7%	8%	4%
Total	100%	100%	100%	100%	100%	100%	100%	100%	100%	100%	100%	100%	100%	100%	100%	100%
Composition of Registered Voters	100%	15%	15%	7%	19%	10%	16%	19%	42%	23%	20%	15%	27%	48%	39%	48%

Do you approve or disapprove of the job Barack Obama is doing as President?

1250 Registered Voters	All	Party Affiliation							Tea Party Movement				Tea Party Identi		2008 Vote	
		<u>Strong D</u>	<u>Dem</u>	<u>Indy Lean D</u>	<u>Ind</u>	<u>Indy Lean R</u>	<u>Rep</u>	<u>Strong R</u>	<u>Fav</u>	<u>Unfav</u>	<u>Neut</u>	<u>No Op</u>	<u>Yes</u>	<u>No</u>	<u>Obama</u>	<u>McCain</u>
Approve	34%	83%	60%	72%	31%	1%	12%	2%	4%	86%	28%	46%	5%	57%	77%	4%
Disapprove	57%	15%	25%	21%	53%	86%	79%	95%	91%	10%	55%	35%	94%	33%	16%	90%
Not Sure	9%	2%	15%	7%	16%	12%	9%	3%	4%	4%	18%	19%	1%	10%	7%	7%
Total	100%	100%	100%	100%	100%	100%	100%	100%	100%	100%	100%	100%	100%	100%	100%	100%
Composition of Registered Voters	100%	15%	15%	7%	19%	10%	16%	19%	42%	23%	20%	15%	27%	48%	39%	48%

Which one of the following is the most important issue facing the United States? The economy? The environment? The war on terror? Health care? Immigration? Education? The federal deficit? Or some other issue?

1250 Registered Voters	All	Party Affiliation							Tea Party Movement				Tea Party Identi		2008 Vote	
Margin of Sampling Error: ± 2.8%		Strong D	Dem	Indy Lean D	Ind	Indy Lean R	Rep	Strong R	Fav	Unfav	Neut	No Op	Yes	No	Obama	McCain
Economy	53%	62%	60%	60%	47%	43%	59%	46%	46%	63%	58%	51%	48%	57%	60%	48%
Environment	2%	1%	1%	4%	6%	1%	0%	1%	1%	5%	2%	1%	0%	4%	4%	1%
War On Terror	4%	4%	4%	2%	2%	3%	4%	6%	4%	3%	3%	4%	5%	4%	4%	4%
Health Care	11%	16%	10%	11%	6%	8%	9%	15%	10%	11%	8%	16%	11%	9%	13%	10%
Immigration	2%	1%	1%	3%	3%	3%	2%	2%	3%	1%	1%	2%	3%	2%	1%	2%
Education	5%	5%	9%	5%	4%	2%	5%	4%	2%	8%	8%	6%	2%	6%	7%	4%
Federal Deficit	13%	3%	7%	10%	12%	25%	13%	21%	24%	2%	7%	5%	26%	8%	5%	20%
Other	6%	2%	5%	3%	11%	15%	3%	3%	8%	2%	6%	7%	3%	7%	3%	8%
Not Sure	4%	6%	4%	2%	9%	1%	4%	3%	3%	3%	7%	8%	2%	4%	4%	3%
Total	100%	100%	100%	100%	100%	100%	100%	100%	100%	100%	100%	100%	100%	100%	100%	100%
Composition of Registered Voters	100%	15%	15%	7%	19%	10%	16%	19%	42%	23%	20%	15%	27%	48%	39%	48%

Is your opinion of the Tea Party Movement ... favorable? Unfavorable? Neutral? Or, do you have no opinion of the Tea Party Movement?

1250 Registered Voters	All	Party Affiliation							Tea Party Movement				Tea Party Identi		2008 Vote	
Margin of Sampling Error: ± 2.8%		<u>Strong D</u>	<u>Dem</u>	<u>Indy Lean D</u>	<u>Ind</u>	<u>Indy Lean R</u>	<u>Rep</u>	<u>Strong R</u>	<u>Fav</u>	<u>Unfav</u>	<u>Neut</u>	<u>No Op</u>	<u>Yes</u>	<u>No</u>	<u>Obama</u>	<u>McCain</u>
Favorable	42%	10%	14%	18%	45%	64%	46%	77%	100%	0%	0%	0%	93%	21%	10%	66%
Unfavorable	23%	58%	37%	48%	18%	3%	10%	3%	0%	100%	0%	0%	0%	47%	50%	6%
Neutral	20%	13%	26%	21%	19%	25%	27%	14%	0%	0%	100%	0%	6%	19%	18%	20%
No Opinion	15%	19%	23%	13%	17%	8%	18%	6%	0%	0%	0%	100%	1%	14%	22%	8%
Total	100%	100%	100%	100%	100%	100%	100%	100%	100%	100%	100%	100%	100%	100%	100%	100%
Composition of Registered Voters	100%	15%	15%	7%	19%	10%	16%	19%	42%	23%	20%	15%	27%	48%	39%	48%

Do you, yourself, identify with the Tea Party Movement?

1250 Registered Voters	All	Party Affiliation							Tea Party Movement				Tea Party Identi		2008 Vote	
		<u>Strong D</u>	<u>Dem</u>	<u>Indy Lean D</u>	<u>Ind</u>	<u>Indy Lean R</u>	<u>Rep</u>	<u>Strong R</u>	<u>Fav</u>	<u>Unfav</u>	<u>Neut</u>	<u>No Op</u>	<u>Yes</u>	<u>No</u>	<u>Obama</u>	<u>McCain</u>
Margin of Sampling Error: ± 2.8%																
Yes	27%	3%	10%	10%	19%	50%	31%	59%	61%	0%	8%	1%	100%	0%	5%	47%
No	48%	77%	63%	76%	52%	24%	37%	23%	24%	97%	45%	43%	0%	100%	73%	31%
Not Sure	25%	20%	28%	14%	29%	26%	32%	18%	15%	3%	47%	56%	0%	0%	22%	22%
Total	100%	100%	100%	100%	100%	100%	100%	100%	100%	100%	100%	100%	100%	100%	100%	100%
Composition of Registered Voters	100%	15%	15%	7%	19%	10%	16%	19%	42%	23%	20%	15%	27%	48%	39%	48%

1920 Election

- President
 - Republican Warren G. Harding, Ohio / Calvin Coolidge, Mass (404)
 - Democrat James M. Cox, Ohio / Franklin D. Roosevelt, NY (127)
 - Socialist Eugene V. Debs, Indiana / Seymour Stedman, IL (0)
- Governor
 - Republican Warren T. McCray
 - Democrat Carleton B. McCulloch
- United States House of Representatives
 - 13 Republicans to 0 Democrats

1924 Election

- President
 - Republican Calvin Coolidge, Mass / Charles G. Dawes, IL (382)
 - Democrat John W. Davis, WVa / Charles W. Bryan, Neb (136)
 - Progressive Robert LaFollette, Wis / Burton Wheller, Mont (13)
- Governor
 - Republican Ed Jackson
 - Democrat Carleton B. McCulloch
- United States House of Representatives
 - 10 Republicans to 3 Democrats

1928 Election

- President
 - Republican Herbert Hoover, CA / Charles Curtis, Kan (444)
 - Democrat Alfred Smith, NY / Joseph Robinson, Ark (87)
- Governor
 - Republican Harry Leslie
 - Democrat Frank Dailey
- United States House of Representatives
 - 10 Republicans to 3 Democrats

1932 Election

- President
 - Democrat Franklin Roosevelt, NY / John Nance Garner, TX (472)
 - Republican Herbert Hoover, CA / Charles Curtis, Kan (59)
 - Socialist Norman Thomas, NY / James Maurer, PA (0)
- Governor
 - Democrat Paul McNutt
 - Republican Raymond Springer
- United States House of Representatives
 - 12 Democrats to 0 Republicans

1936 Election

- President
 - Democrat Franklin Roosevelt, NY / John Nance Garner, TX (523)
 - Republican Alfred Landon, Kan / Frank Knox, IL (8)
 - Union William Lemke, ND / Thomas O'Brien, Mass (0)
- Governor
 - Democrat M. Clifford Townsend
 - Republican Raymond Springer
- United States House of Representatives
 - 11 Democrats to 1 Republican

1940 Election

- President
 - Republican Wendell Willkie, IN / Charles McNary, Ore (82)
 - Democrat Franklin Roosevelt, NY / Henry Wallace, IA (449)
- Governor
 - Democrat Henry Schricker
 - Republican Glen R. Hillis
- United States House of Representatives
 - 8 Republicans to 4 Democrats

1944 Election

- President
 - Republican Thomas Dewey, NY / John Bricker, OH (99)
 - Democrat Franklin Roosevelt, NY / Harry Truman, Mo (432)
- Governor
 - Republican Ralph Gates
 - Democrat Samuel D. Jackson
- United States House of Representatives
 - 9 Republicans to 2 Democrats

1948 Election

- President
 - Republican Thomas Dewey, NY / Earl Warren, CA (189)
 - Democrat Harry Truman, Mo / Alben Barkley, KY (303)
 - States' Rights J. Strom Thurmond, SC / Fielding Wright, Miss (39)
 - Progressive Henry Wallace, IA / Glen Taylor, ID (0)
- Governor
 - Democrat Henry Schricker
 - Republican Hobart Creighton
- United States House of Representatives
 - 7 Democrats to 4 Republicans

1952 Election

- President
 - Republican Dwight Eisenhower, NY / Richard Nixon, CA (442)
 - Democrat Adlai Stevenson, IL / John Sparkman AL (89)
- Governor
 - Republican George Craig
 - Democrat John Watkins
- United States House of Representatives
 - 10 Republicans to 1 Democrats

1956 Election

- President
 - Republican Dwight Eisenhower, NY / Richard Nixon, CA (457)
 - Democrat Adlai Stevenson, IL / Estes Kefauver, TN (73)
 - Independent Walter Jones, AL / Herman Talmadge, Ga (1)
- Governor
 - Republican Harold Handley
 - Democrat Ralph Tucker
- United States House of Representatives
 - 9 Republicans to 2 Democrats

1960 Election

- President
 - Republican Richard Nixon, CA / Henry Cabot Lodge, Mass (219)
 - Democrat John Kennedy, Mass / Lyndon Johnson, TX (303)
 - Independent Harry Byrd, VA / J. Strom Thurmond, SC (15)
- Governor
 - Democrat Matthew Welsh
 - Republican Crawford Parker
- United States House of Representatives
 - 7 Republicans to 4 Democrats

1964 Election

- President
 - Democrat Lyndon Johnson, TX / Hubert Humphrey, Minn (486)
 - Republican Barry Goldwater, AZ / William Miller, NY (52)
- Governor
 - Democrat Roger Branigin
 - Republican Richard Ristine
- United States House of Representatives
 - 6 Democrats to 5 Republicans

1968 Election

- President
 - Republican Richard Nixon, CA / Spiro Agnew, MD (301)
 - Democrat Hubert Humphrey, Minn / Edmund Muskie, Maine (191)
 - American Independent George Wallace, AL / Curtis LeMay, OH (46)
- Governor
 - Republican Edgar Whitcomb
 - Democrat Robert Rock
- United States House of Representative
 - 7 Republicans to 4 Democrats

1972 Election

- President
 - Republican Richard Nixon, CA / Spiro Agnew, MD (520)
 - Democrat George McGovern, SD / R. Sargent Shriver, MD (17)
 - Libertarian John Hospers, CA / Theodora Nathan, OR (1)
- Governor
 - Republican Otis Bowen
 - Democrat Matthew Welsh
- United States House of Representatives
 - 7 Republicans to 4 Democrats

1976 Election

- President
 - Republican Gerald Ford, Mich / Robert Dole, Kan (240)
 - Democrat James Earl Carter, GA / Walter Mondale, Minn (297)
 - Independent Ronald Reagan, CA / Robert Dole, Kan (1)
- Governor
 - Republican Otis Bowen
 - Democrat Larry Conrad
- United States House of Representatives
 - 8 Democrats to 3 Republicans

1980 Election

- President
 - Republican Ronald Reagan, CA / George HW Bush, TX (489)
 - Democrat James Earl Carter, GA / Walter Mondale, Minn (49)
 - Independent John B. Anderson, IL / Patrick Lucey, Wis (0)
- Governor
 - Republican Robert Orr
 - Democrat John Hillenbrand II
- United States House of Representatives
 - 6 Democrats to 5 Republicans

1984 Election

- President
 - Republican Ronald Reagan, CA / George HW Bush, TX (525)
 - Democrat Walter Mondale, Minn / Geraldine Ferraro, NY (13)
- Governor
 - Republican Robert Orr
 - Democrat Wayne Townsend
- United States House of Representatives
 - 5 Republicans to 5 Democrats

1988 Election

- President
 - Republican George HW Bush, TX / J. Danforth Quayle, IN (426)
 - Democrat Michael Dukakis, Mass / Lloyd Bentsen, Jr., TX (111)
 - Independent Lloyd Bentsen, Jr., TX / Michael Dukakis, Mass (1)
- Governor
 - Democrat Evan Bayh
 - Republican John Mutz
- United States House of Representatives
 - 6 Democrats to 4 Republicans

1992 Election

- President
 - Republican George HW Bush, TX / J Danforth Quayle, IN (168)
 - Democrat William Clinton, Ark / Albert Gore, Jr., TN (370)
 - Independent H Ross Perot, TX / James Stockdale, CA (0)
- Governor
 - Democrat Evan Bayh
 - Republican Linley Pearson
- United States House of Representatives
 - 7 Democrats to 3 Republicans

1996 Election

- President
 - Republican Robert J. Dole, Kan / Jack Kemp, NY (159)
 - Democrat William Clinton, Ark / Albert Gore, Jr., TN (379)
 - Reform H Ross Perot, TX / Pat Choate, DC (0)
- Governor
 - Democrat Frank O'Bannon
 - Republican Steve Goldsmith
- United States House of Representatives
 - 6 Republicans to 4 Democrats

2000 Election

- President
 - Republican George W Bush, TX / Richard Cheney, WY (271)
 - Democrat Albert Gore, Jr., TN / Joe Lieberman, CT (266)
- Governor
 - Democrat Frank O'Bannon
 - Republican David McIntosh
- United States House of Representatives
 - 6 Republicans to 4 Democrats

2004 Election

- President
 - Republican George W Bush, TX / Richard Cheney, WY (286)
 - Democrat John Kerry, Mass / John Edwards, NC (251)
- Governor
 - Republican Mitchell Daniels
 - Democrat Joseph Kernan
- United States House of Representatives
 - 7 Republicans to 2 Democrats

2008 Election

- President
 - Democrat Barack Obama, IL / Joseph Biden, Del (364)
 - Republican John McCain, AZ / Sarah Palin, Alaska (173)
- Governor
 - Republican Mitchell Daniels
 - Democrat Jill Long Thompson
- United States House of Representatives
 - 5 Democrats to 4 Republicans